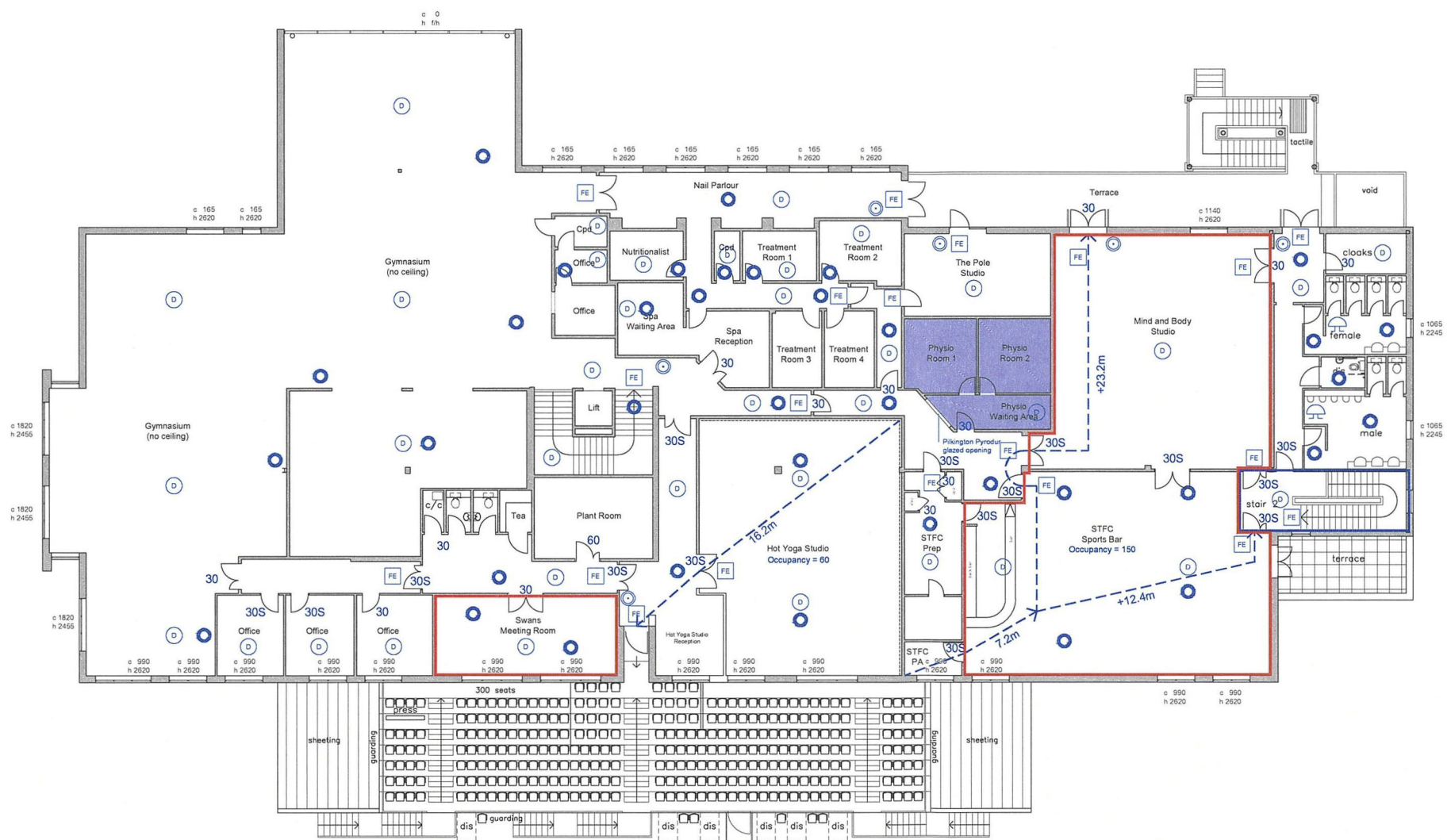


NOTES
 1. No dimensions are shown on this drawing.
 2. All dimensions are in millimetres.
 3. Where necessary, dimensions shall be given in millimetres and rounded to the nearest millimetre.
 4. DIMENSIONS: The spacing of the drawing shall be in accordance with the standards of British Standards.

REVISION
 REV DESCRIPTION DATE BY IAD

Appendix B2

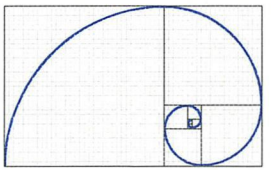
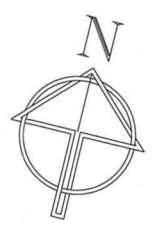


LEGEND *Licensing area*

- 1 HR Fire rated construction.
- 30 30 min Fire door fitted with positive self-closing device (FD30)
- 30S 30 min Fire door fitted with positive self-closing device and smoke seals (FD30S)
- Break glass call point.
- ☼ Fire Alarm - Audible warning device.
- FE Fire Exit.
- Emergency Lighting Points.
- D Smoke / Heat Detector.

ALL INFORMATION BASED UPON RECORD DRAWINGS FROM THE ORIGINAL BASE BUILD COMPLETED IN 2003, AND A VISUAL INSPECTION WHERE LAYOUT HAS BEEN ALTERED. NO INSPECTION WAS UNDERTAKEN OF CONCEALED SPACES INCLUDING CEILING VOIDS.

NOT SURVEYED
 NO ACCESS



FIBONACCI-ARCHITECTS
 Milton Heath House · Westcott Road · Dorking · Surrey · RH4 3NS
 Tel: 01306 886287 www.fibonacci-architects.co.uk

PROJECT
THE THAMES CLUB
 WHEATSHEAF LANE, STAINES
 TW18 2PD

DRAWING
FIRST FLOOR LICENCE PLAN

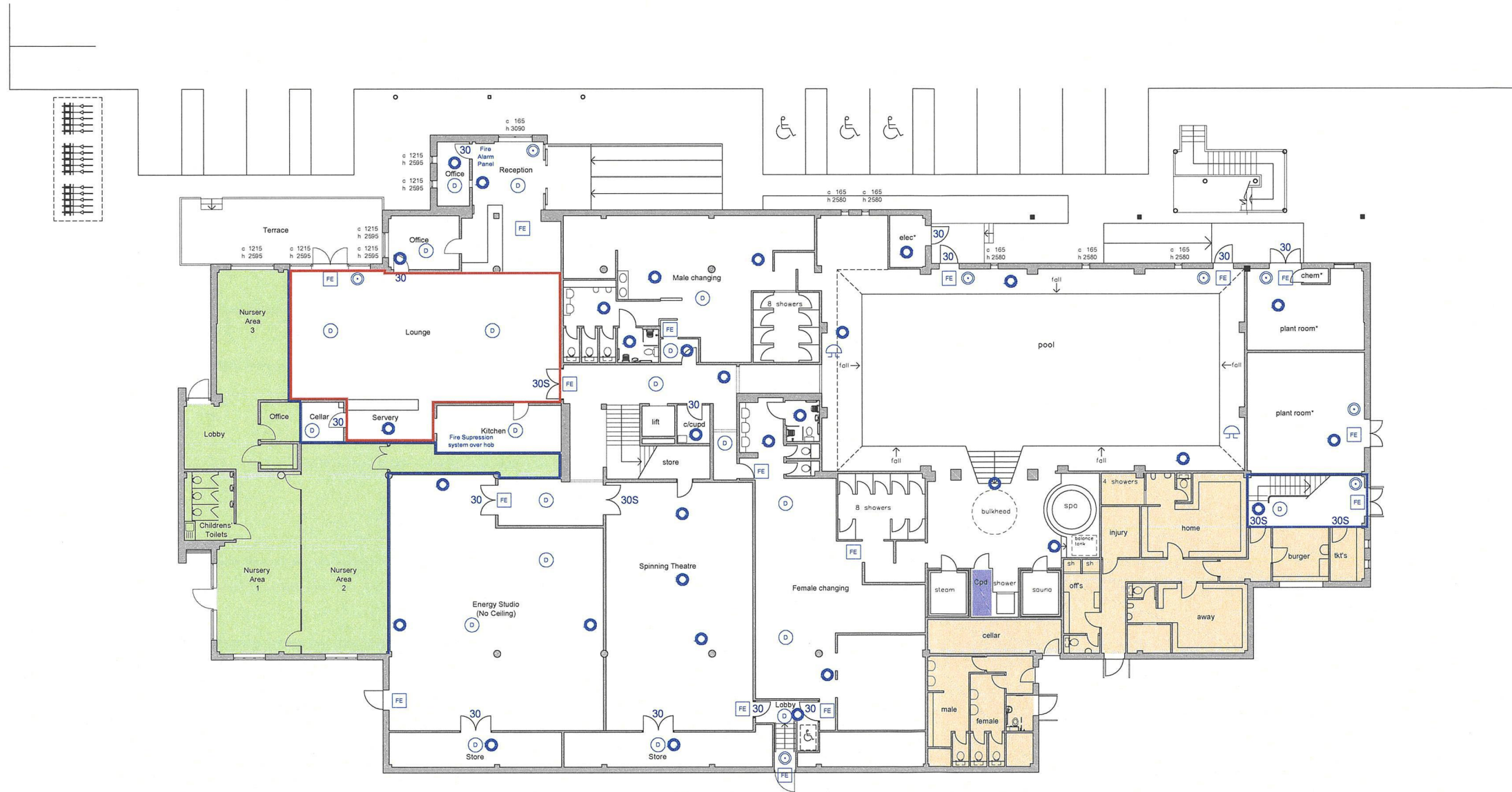
DRAWN: DMF
 DATE: Nov 2018
 SCALE: 1:100 @ A3
 1:200 @ A2

6195 L 002

NOTES
 1. No amendment to existing drawings
 2. No amendment to existing drawings
 3. Where necessary, check for compliance and ensure the drawings are correct
 4. COPROFIT: The contents of this document are the property of the author and shall not be reproduced without the author's permission or without the author's consent.

REVISION
 REV. DESCRIPTION DATE BY DDD

Appendix B2

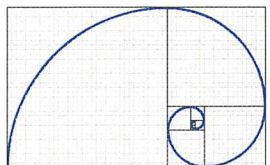


LEGEND *Lic. area.*

- 1 HR Fire rated construction.
- 30 min Fire door fitted with positive self-closing device (FD30)
- 30S 30 min Fire door fitted with positive self-closing device and smoke seals (FD30S)
- Break glass call point.
- Fire Alarm - Audible warning device.
- Fire Exit.
- Emergency Lighting Points.
- Smoke / Heat Detector.

ALL INFORMATION BASED UPON RECORD DRAWINGS FROM THE ORIGINAL BASE BUILD COMPLETED IN 2003, AND A VISUAL INSPECTION WHERE LAYOUT HAS BEEN ALTERED. NO INSPECTION WAS UNDERTAKEN OF CONCEALED SPACES INCLUDING CEILING VOIDS.

- NOT SURVEYED STAINES TOWN FC
- NOT SURVEYED PLAYTIME NURSERIES
- NOT SURVEYED NO ACCESS



FIBONACCI-ARCHITECTS
 Milton Health House - Westcott Road - Dorking - Surrey - RH4 3NB
 Tel: 01306 886289 www.fibonacci-architects.co.uk

PROJECT
THE THAMES CLUB
 WHEATSHEAF LANE, STAINES
 TW18 2PD

DRAWING
GROUND FLOOR
 LICENCE PLAN

DESIGN	DATE	REV	DESCRIPTION
1	Nov 2018	1	6195 L 001